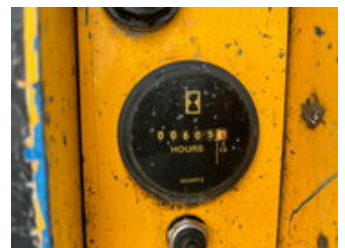


# Leeijen Trading

## Genie GS-1532 Electric scissorlift, 2006 Year

### General characteristics

Brand	Genie
Subcategory	Scissor lift wheeled
Year of construction	2006
Hours displayed	605
Colour	Yellow
Condition	Used
Fuel	Electric
Reference	242001
CE marking	And



### Properties

Single weight	1.238kg
Serial number	GS3006A-83417
Max. lifting capacity	272kg
Mast type	Pair of scissors

# Genie GS-1532 Electric scissorlift, 2006 Year

## Technical specifications

Drive

wheels

## Description

Genie GS-1532 electric scissorlift. Year: 2006, Hourmeter reading: 605, Working height, 6,6 Meters. Equipped with: CE marking + Certificate, NON marking tyres, Extendable platform, Build in battery charger

## Accessories